

**Eco-Friendly Manufacturing**

**Reduce costs with  
advanced technology  
and reduced  
carbon footprint**



**Electric Valve  
Gate System**



# P.E.T.S. Electric Valve Gate System

Precision control makes the Electric Valve Gate System ideally suited for applications requiring a clean room environment system.



P.E.T.S. customers report a 18-23% production increase after implementing the Electric Valve Gate System.

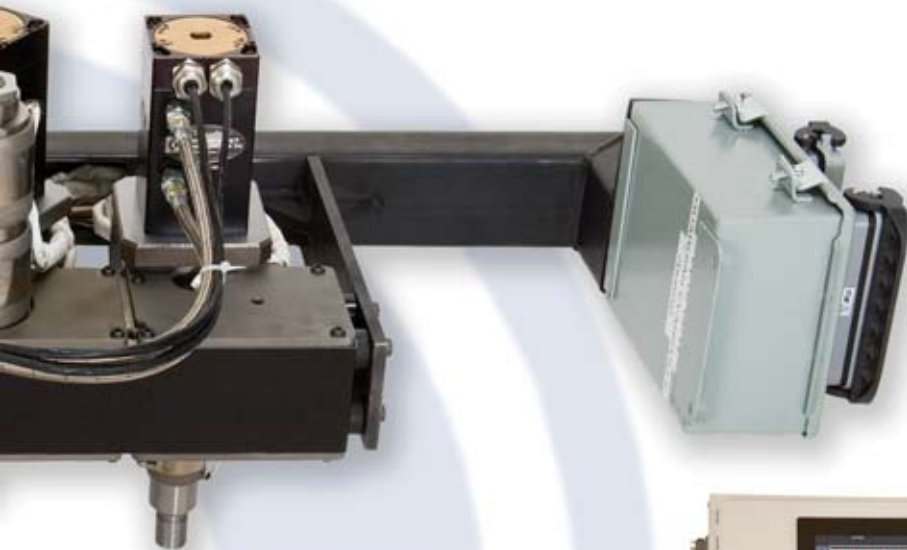


# P.E.T.S.

4141 Luella Lane, Auburn Hills, MI 48326  
248.373.0800

[www.petsinc.net](http://www.petsinc.net)

The Electric Valve Gate with variable pin position and variable speeds, create the Ultimate Processing Window.

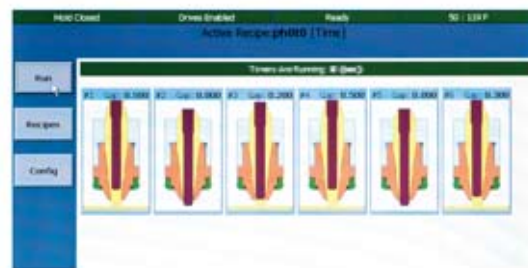
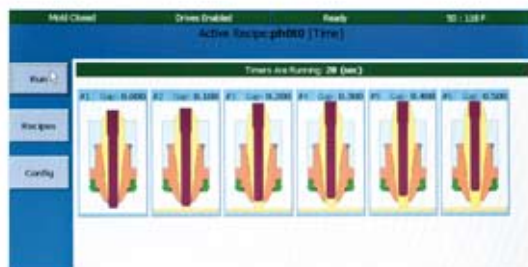
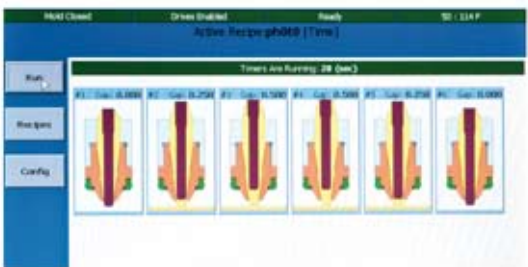


- Variable pin adjustment to balance multi drop molds (in .001" increments)
- Programmable & variable open and close pin speeds
- Programmable pin positions for each pin
- Travels 7" per second (adjustable)
- Viewable pin position screen
- Unlimited process ability
- Closes with more force than hydraulic or air
- No hydraulic or air leaks
- Up to 3/4" of stroke
- Great for "clean room environment"
- Perfect for co-injection & family molds
- Proven to reduce scrap
- Faster mold changes
- Runs off 110v





User friendly touch-screen control/program interface



Pin Position Screen displays Drop-tip detail and stroke

# **P.E.T.S.**

## **Leader in Plastics Innovation**

- **Valve Gate Sequencers**
- **Hot Runner Manifold Systems**
- **Mold Filling Analysis Services**
- **Mold Cooling Analysis Services**
- **Temperature Control Systems**
- **Auxiliary & Secondary Equipment**

### **Hot Runner & Hot Half Unitized System**

